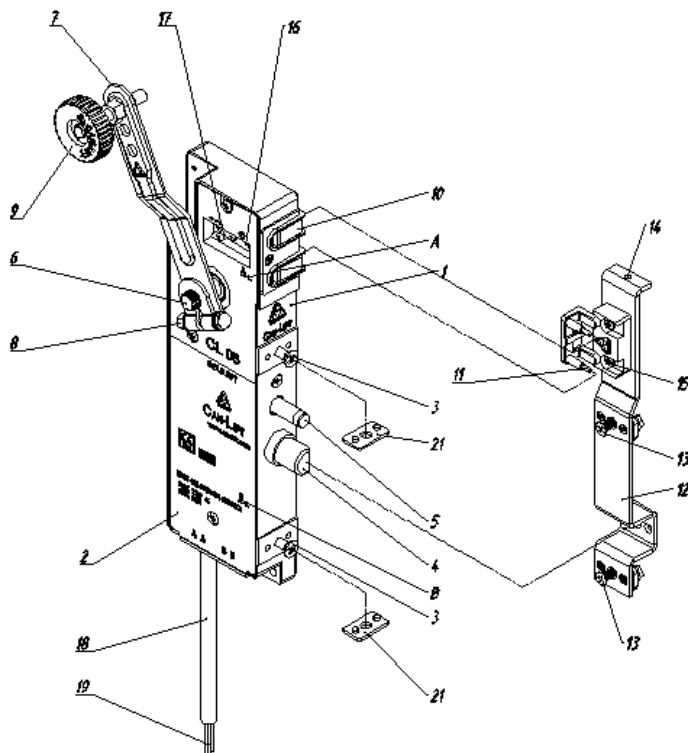
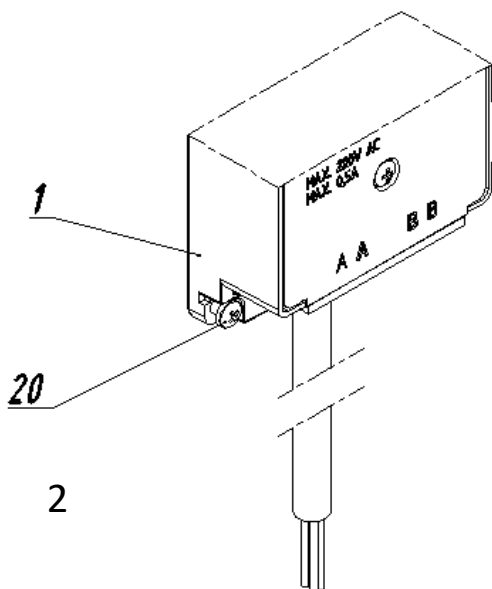


CL-05 M DOUBLE SAFETY DOUBLE PINNED LIFT LANDING DOOR LOCKING DEVICE MOUNTING, ADJUSTMENT AND MAINTENANCE GUIDE



the help of a terminal.



the bolt No 16.

**** Bolt No. 16 must be loosened while adjusting back and forth and must be tightened again after adjustment.**

IMPORTANT NOTE

In order to deactivate the PRE-BLOCKING safety system used in the CL-05 M Double Safety Double Pinned Lift Landing Door Locking Device, 2nd Safety Pin No. 5 should protrude 2 mm from its hole in the frame. Only after it is achieved, the locking system switches to the locking process. If the hole from which the 2nd Safety Pin No. 5 comes out is blocked for an undesired reason, the lock blocks itself and the lock bolt No. 4 cannot move forward, so the locking operation does not take place. In-lock safety contact does not complete its cycle and prevents the system from operating. (If the diameter of the hole prepared for the exit of the 2nd Safety Pin is small, enlarge the hole with a Ø12 drill.)

A pre-blocking system has been developed with a minimum gap of 2.5 mm between the door frame and door wing. If the gap is less than this value, it would not be possible to activate or deactivate the pre-safety system and the lock would block itself.

MOUNTING – ADJUSTMENT INSTRUCTION

- 1- Remove M6 bolts No 3 on the surface of the locking device body No 1.
- 2- Check that there are stiffening plates on the door frame that must be welded for lock mounting.
- 3- Mount the lock body on the door frame by using M6 bolts No 3
- 4- Check the lock bolt No. 4, which enables the locking process to take place and check if the 2nd Safety Pin No. 5 is operating comfortably in the holes where it comes out of the door frame by moving it back and forth. If there is a situation that prevents its operation, enlarge the holes with a drill of appropriate diameter.
- 5- Attach the unlocking lever No. 7 to the knurled part of the mechanism draw lever shaft No. 6, with the roller No. 9 is positioned outside the lock body.
- 6- Tighten the unlocking lever locking bolt No. 8 by adjusting the unlocking lever according to the operating position of the lift landing door retiring cam (lirpomp). Fasten the mechanism draw lever shaft No. 5 and the unlocking lever together.
- 7- The cable connections of the contacts for the electricity connection can be set with the help of terminals through two different colored cables No. 19 that come out of the cable protecting hose No. 18.

Set the cable connections of the counter contact group No. 10, which is marked with the letter **A** and controls the full closing of the door, with the black-colored cables No.19 with the help of a terminal.

Set the cable connections of the safety contact inside the lock, which controls the complete execution of the locking operation marked with the letter **B**, with the white-color cables No. 19 with

Connect the grounding cable to the body with the help of the grounding bolt No 20 shown in the picture No 2. Do not use a socket terminal for a grounding connection.

- 8- The assembly of the plug contact No. 11 can be done with the help of the plug contact door mounting plate No. 12.

Remove the M5 bolts No. 13 from the plug contact door mounting plate No. 12.

Hold from the upper curved part of the plug contact door mounting plate No.12 and insert it into the hole on the door wing. If you think that the curved part will slip out of your hand during this process, you can use hole No 14. A piece of string or wire that you will attach to the hole No 14 would help you. After the plug contact door mounting plate is aligned to its place, mount to the door wing with the help of bolts No. 13. Tighten the bolts when an approximate plug contact axis is achieved.

- 9- The axis adjustment of the plug contact No. 11 can be done with the help of bolts No. 13 as in the past, or it can be done independently with the help of the superiority we have done to our product. By loosening the plug contact adjustment bolts No. 15, apply the plug contact axis adjustment and tighten them sufficiently at the end of the process.

- 10- Loosen the locking bolt No. 16 in order to adjust the axis of the plug contact No. 10 back and forth. Then, manually adjust the back and forth adjustment using pin No. 17 on the plug contact counter contact No. 10. Finally, fasten the position by tightening

When the gap between the door frame and the door wing is less than 2.5 mm, pull the lock back inside the frame by using the black-color door gap adjustment plates No. 21 placed in the bags inside the lock box. In this way, you can activate the CL-05 M Double Safety Double Pinned Lift Landing Door Locking Device.

Door gap adjustment plates No. 21 are manufactured in different thicknesses. You can pull the lock back by using these plates between the lock front surface and the stiffening plate.

The pin protrusions on the plates will be inserted into the holes on the mounting surface of the lock body. Since the thicknesses of the plates are different, use the plates with a sufficient thickness.

MAINTENANCE INSTRUCTION

- 1-** Liquid oils should be used instead of solid oils during monthly routine maintenance of lifts, since solid oils accumulate dust and dirt on the working parts.
 - 2-** Check the healthy working conditions when carrying out the monthly routine maintenance as described during the mounting.
 - 3-** Do not execute any non-recommended interventions.
 - 4-** Never disassemble inside of the lock even for repair and maintenance purposes.
 - 5-** During the general maintenance, if the lift door is required to be painted, lock must be dismantled and then mounted on its original place after the painting is completed. Paint residues that entering into the working parts can lead to problems of operation of the lock. Paint removers can damage plastic parts.
 - 6-** If situations that prevent the conductance of working contacts are detected during monthly routine controls, apply proper cleaning to eliminate unfavorable conditions. If the contacts are required to be replaced, please contact our company.
- Operation life of the product is Ten (10) years. Warranty period is Two (2) years.**